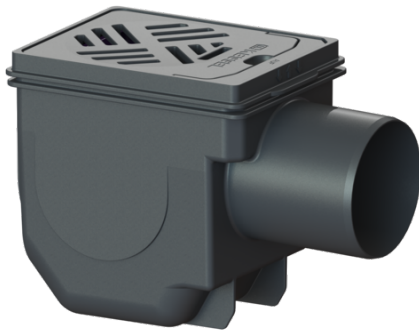


Basement drain DN 100, Black grating, 150 x 190 mm



Article information

Item no.: 33101
 GTIN: 4026092007860
 Price group: 10

Advantages

- Integrated odour trap
- Including sludge bucket

Description

The basement drain made of polymer for floor slab installation is equipped with an odour trap and a sludge bucket. The upper section with slotted grating is vertically adjustable.

Variant

Contents of sludge trap:	yes
Sealing water height:	50 mm
Discharge rate (l/s) with 20 mm backwater:	1,8

General characteristics

Standard:	EN 1253-1
Nominal size (DN):	100
Outer diameter (OD):	110 mm

Dimensions

Vertical adjustment:	25 - 55 mm
Net weight:	1,37 kg
Gross weight:	1,45 kg
Cutout dimension, width:	190 mm
Cutout dimension, length:	320 mm
Installation depth:	210 - 240 mm
Vertical adjustment:	vertically adjustable upper section
Length:	285 mm
Width:	170 mm
Packaging dimension:	length
Packaging dimension:	width
Packaging dimension:	height

Tank/drain body

Material of drain body:	PP
System:	lateral

Coverage features

Type of cover:	Slotted cover
Cover material:	Polymer
Colour of cover:	black
Width of cover:	190 mm
Length of cover:	150 mm
Frame material:	Polymer
Cover locking:	placed
Load class:	K 3 (EN 1253-1)
Rim length:	159 mm
Rim material:	200 mm
Upper section material:	Polymer
Contents of sludge trap:	yes
Odour trap:	included